

# Crew Accommodation on a +3000GT Yacht

## Implications of MLC 2006



Jonathan Strachan  
Burness Corlett Three Quays

# Introduction

---

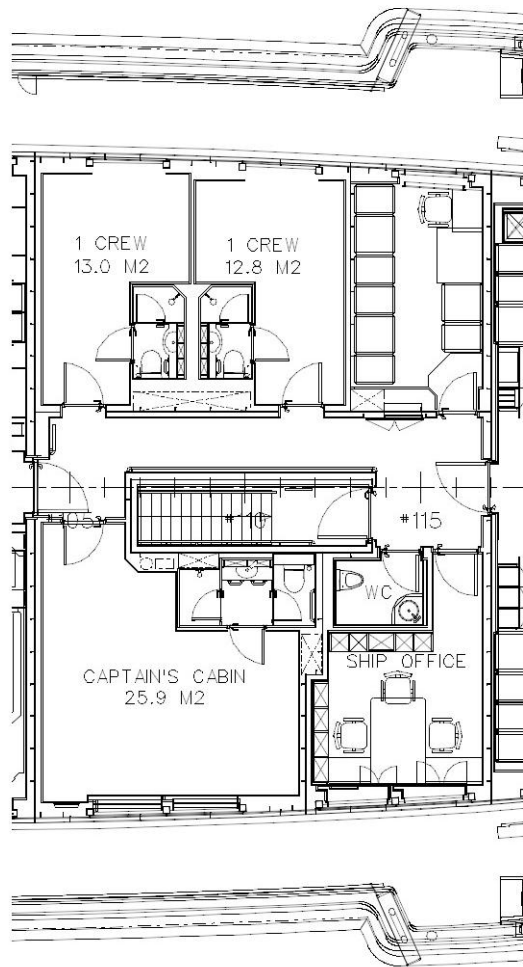
- **Short description of the yacht**
  - **Arrangement of crew accommodation**
  - **Listing areas of cabins etc**
  - **Show that yacht complies with the requirements.**
-

# Yacht Particulars

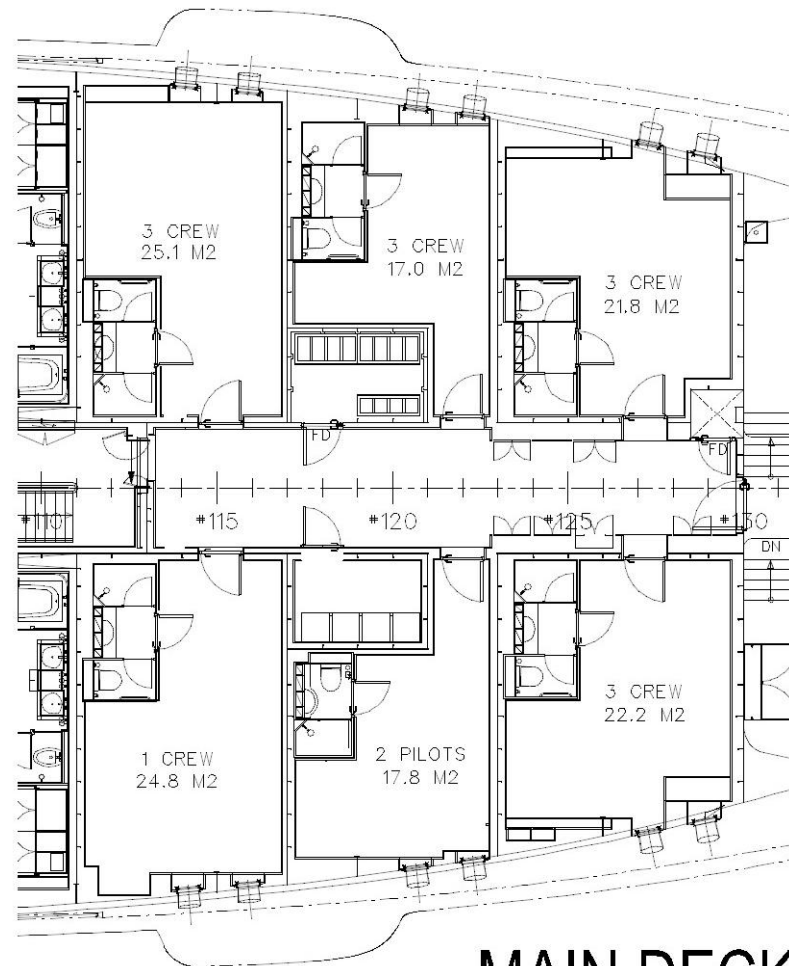
---

- Length Overall >110 metres
  - Gross Tonnage >5000
  - 
  - Guest (Passenger) Complement 18
  - Crew Complement 47
  - Pilots 2
  
  - Built as a SOLAS passenger ship
  - Therefore considered to be a passenger ship for MLC.
-

# Cabin Arrangement

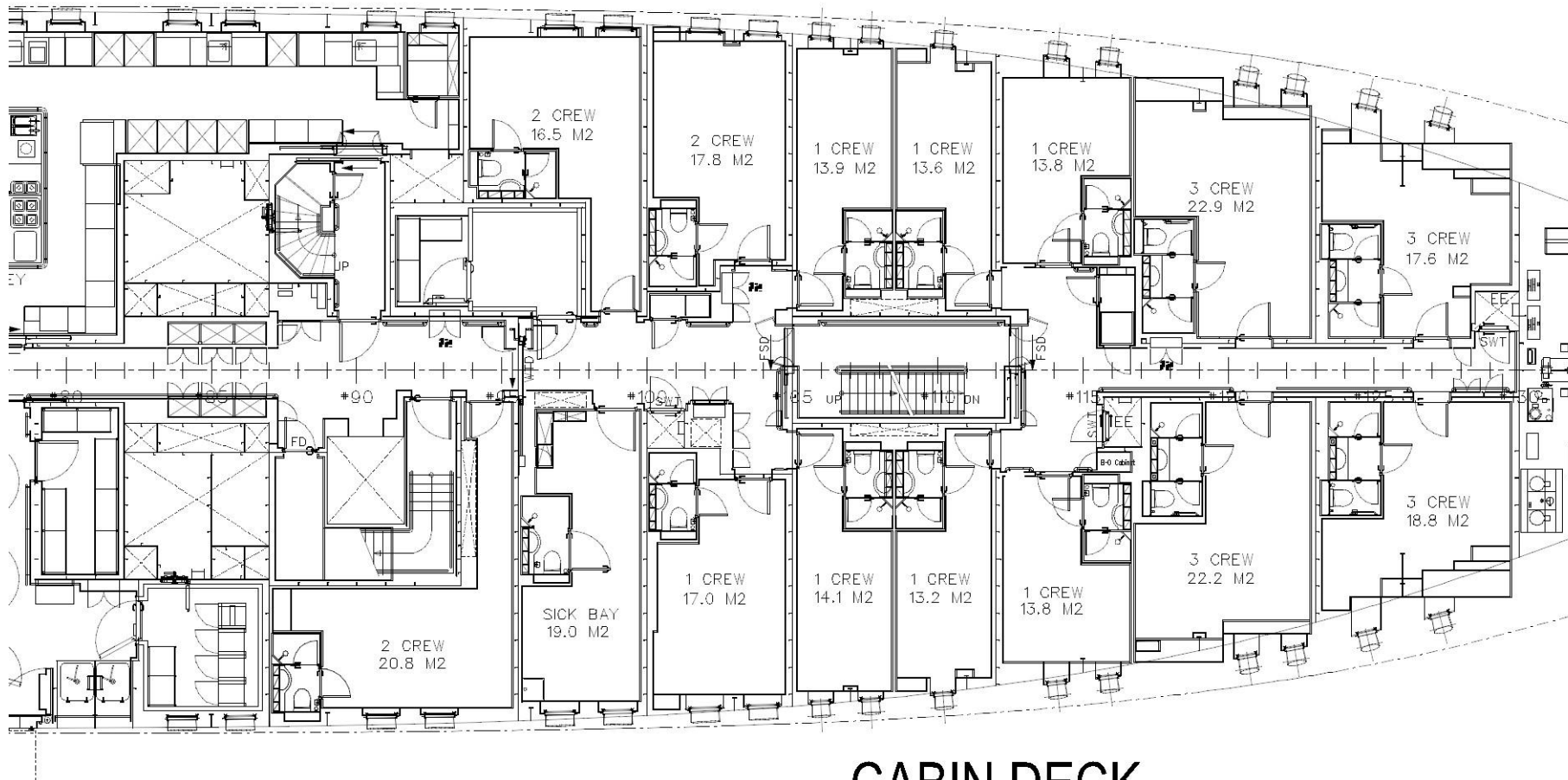


BRIDGE DECK



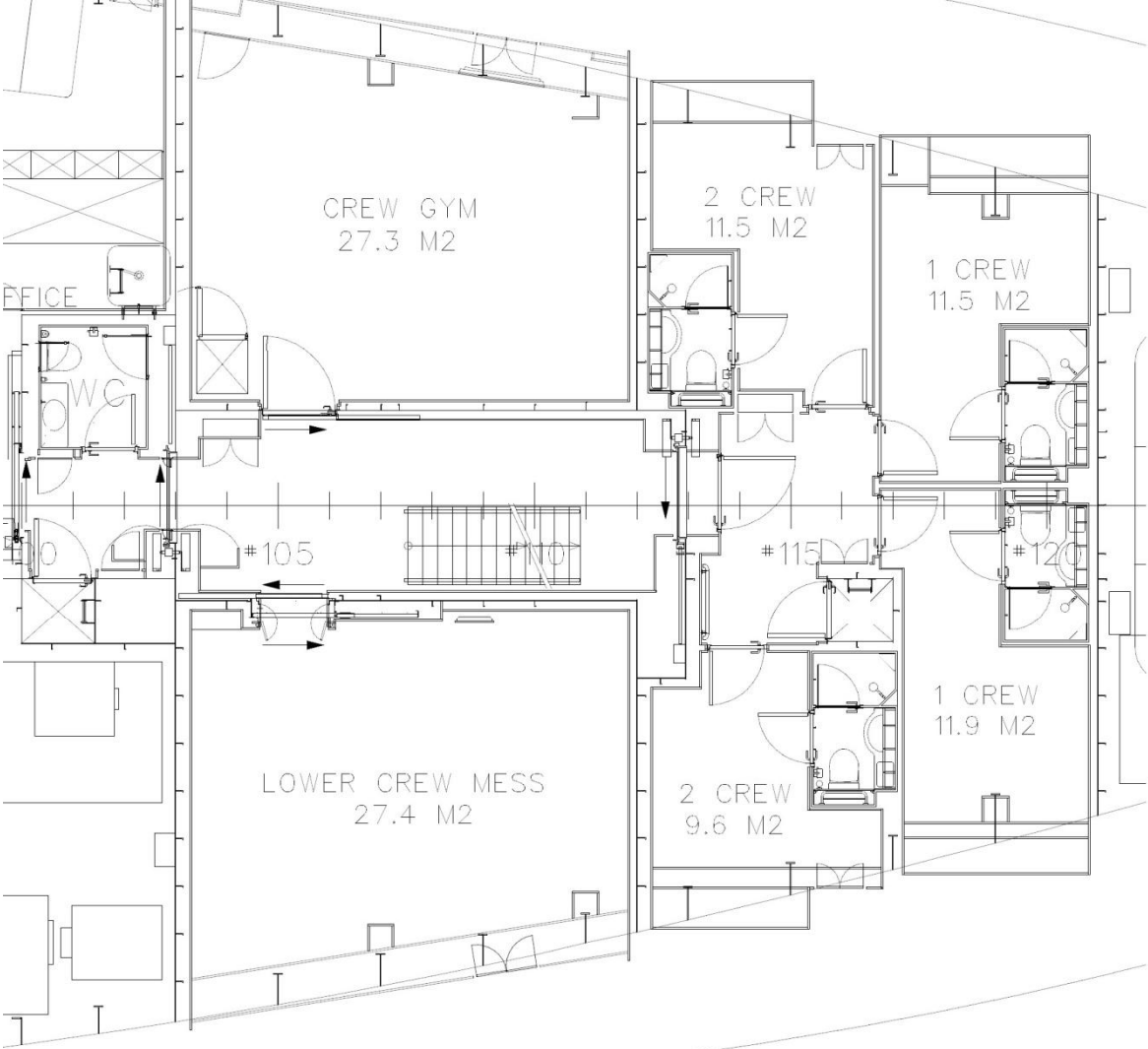
MAIN DECK

# Cabin Arrangement



CABIN DECK

# Cabin Arrangement



# LOWER DECK

# Cabin Arrangement

Lower Deck	2 x 1 berth	min 11.5m <sup>2</sup>
	2 x 2 berth	min 9.6m <sup>2</sup>
	Gymnasium	27m <sup>2</sup>
	Lower mess room	28m <sup>2</sup> for seating 15 persons
Cabin Deck	7 x 1 berth	min 13.2m <sup>2</sup>
	3 x 2 berth	min 16.5m <sup>2</sup>
	4 x 3 berth	min 17.6m <sup>2</sup>
	Sick bay	19.0m <sup>2</sup>
	Crew Mess	57.1m <sup>2</sup> for seating 42 persons
Main Deck	1 x 1 berth	24.8m <sup>2</sup>
	4 x 3 berth	min 17.0m <sup>2</sup>
	1 x 2 berth pilots	17.8m <sup>2</sup>
Bridge Deck	Captain 1 berth	25.9m <sup>2</sup>
	2 x 1 berth	min 12.8m <sup>2</sup>

# Comparison with MLC 2006

Cabin	Required area	Actual Area
Single Cabin	5.5m <sup>2</sup>	Smallest single 11.5 m <sup>2</sup>
Double Cabin	7.5m <sup>2</sup>	Smallest Double 9.6 m <sup>2</sup>
Triple Cabins	11.5 m <sup>2</sup>	Smallest 17.0 m <sup>2</sup>
Junior Officer	7.5 m <sup>2</sup>	Smallest 12.6 m <sup>2</sup>
Senior Officer	8.5 m <sup>2</sup>	Smallest 13.2 m <sup>2</sup>



# Comparison with MLC 2006

---

Therefore we can conclude that all cabins comply.

The lower deck is 1900mm below the load line.

*However this is acceptable for passenger ships under the following ruling.*

*Reg. 3.1.6 (d) In passenger ships...the competent authority may...permit the location of sleeping rooms below the load line.*

---

# Comparison with MLC 2006

MLC	Required area	Actual Area
Mess Room	Cargo Ship 1.5m <sup>2</sup> / Crew  No Pax Ship Requirement	Crew Mess + Lower Crew Mess 1.95m <sup>2</sup> / Crew
Sick Bay	Provided	
Laundry	Provided	
Open Deck Space	Provided	

# Comparison with MLC 2006

---

- **Crew accommodation is compliant with MLC 2006**

Thank You.

